

model 777T

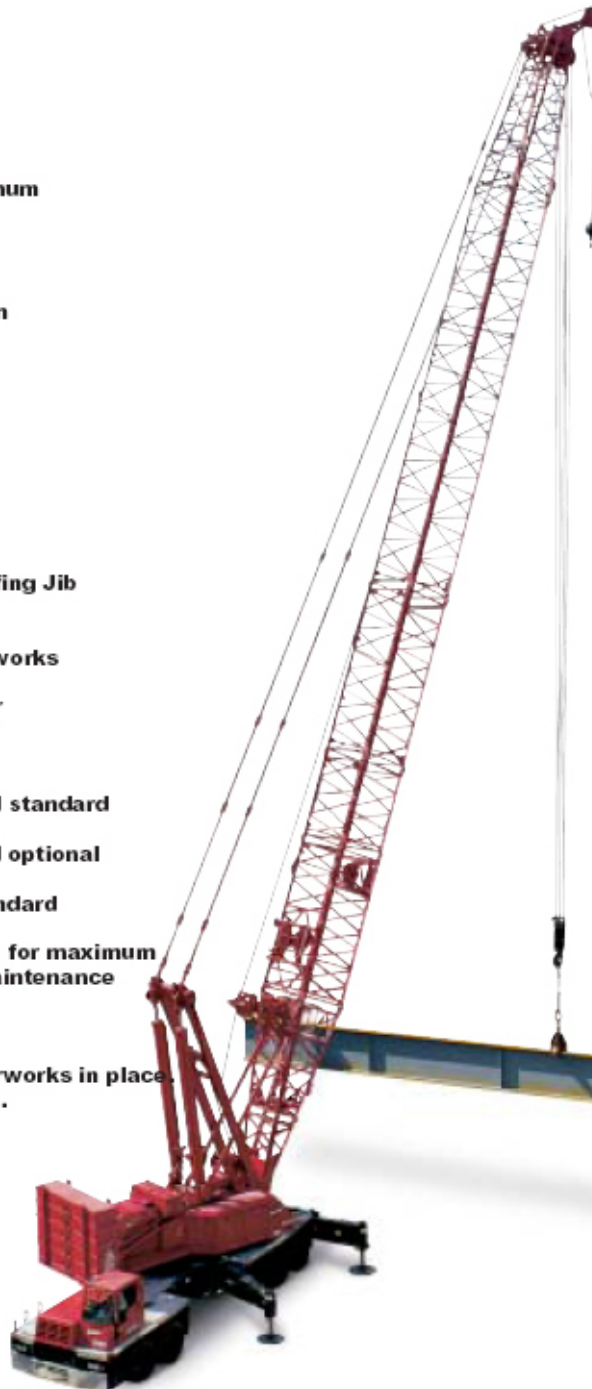
product guide

features

- 181 mton (200 ton) capacity
- 698 mton-m (5,050 kips) Maximum Load Moment
- 82,3 m (270') Heavy-Lift Boom
- 90,8 m (298') Long-Reach Boom
- 91,4 m (300') Fixed Jib on Heavy-Lift Boom
- 96,9 m (318') Fixed Jib on Long-Reach Boom
- 106,7 m (350') Luffing Jib on Heavy-Lift Boom
- 125,0 m (410') Fixed Jib on Luffing Jib on Heavy-Lift Boom
- 195 kW (260 HP) engine upperworks
- 373 kW (500 HP) engine carrier
- EPIC® controls
- 135 m/min (442 fpm) line speed standard
- 177 m/min (581 fpm) line speed optional
- 131 kN (29,500 lb) line pull standard
- Hydraulic-cylinder Boom Hoist for maximum performance with minimum maintenance
- Fast, efficient self-assembly
- 10x6 Carrier travels with upperworks in place, 96,6 kph (60 mph) travel speed.
- Manitowoc CraneCARE®

contents

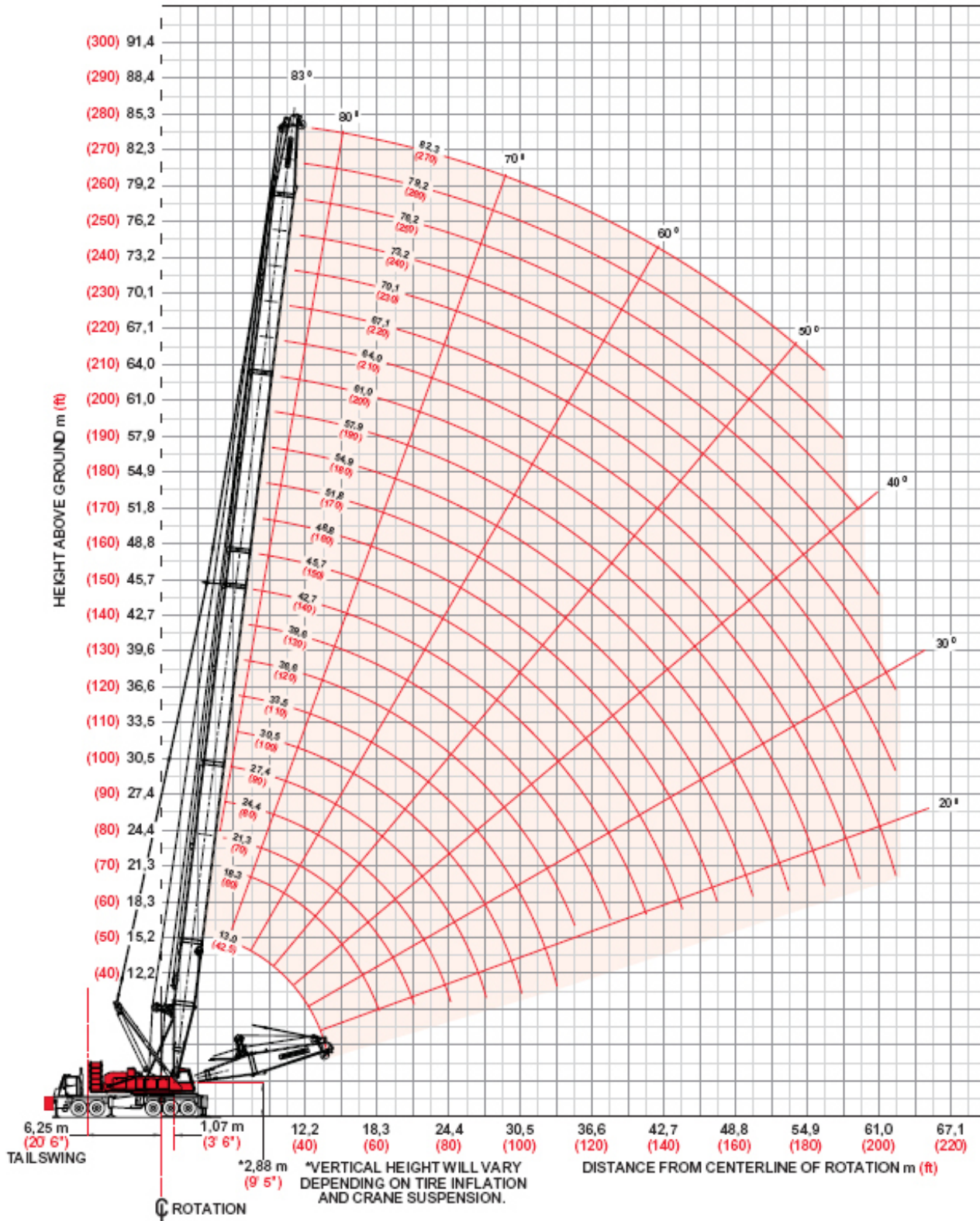
Specifications	3
Outline Dimensions	7
Transport / Assembly	13
Performance Data	16
Boom Combinations	24
Main Boom Range / Load Charts	27
Long Reach Range / Load Charts	31
Fixed Jib Range / Load Charts	33
Luffing Jib Range / Load Charts	39
Luffing Jib on Luffing Jib Range / Load Charts	43
CraneCARE™	47



Manitowoc

heavy-lift boom range diagram

No. 78T Heavy-Lift Boom



LIFTCRANE BOOM CAPACITIES

**BOOM NO. 78T WITH HEAVY LIFT TOP
 0 LB. TO 95,400 LB. CRANE COUNTERWEIGHT
 WITH 25,000 LB. FRONT BUMPER COUNTERWEIGHT
 RATING OVER REAR OR 360 DEG. ON FULLY
 EXTENDED OUTRIGGERS**

LIFTING CAPACITIES. Lifting capacities for various boom lengths and operating radii are for freely suspended loads and do not exceed 85% of a static tipping load. Capacities based on structural competence are denoted by an asterisk(*).

Upper boom point capacity for liftcrane service with single part whip line is 29,500 lbs. or 59,000 lbs. with two part whip line. When boom butt mounted auxiliary drum is used, capacity with single part whip line is 20,000 lbs. or 40,000 lbs. with two part line. In all cases, upper boom point capacities cannot exceed those listed for main boom capacity.

Weight of jib, all load blocks, hooks, weight ball, slings, hoist lines, etc., beneath boom and jib point sheaves, is considered part of main boom load. Boom is not to be lowered beyond radii where combined weights are greater than rated capacity. Where no capacity is shown, operation is not intended or approved.

OPERATING CONDITIONS. Machine to operate in a level position on a firm uniformly supporting surface with outriggers fully extended (22 ft. 8 in.) and set. Refer to the operators manual for outrigger positioning. Radii less than 32 feet not recommended when lifting over front of truck. Minimum boom angle over truck cab is 24 degrees.

Note: Set four main jacks first, then lower center front jack until it just contacts ground to prevent preloading of center front jack. Center front jack must be used when operating on outriggers.

Refer to boom rigging No. 192043, Wire Rope Specification chart No. 7973-A, and Operating Range Diagram chart No. 7974-A. Crane operator judgement must be used to allow for dynamic load effects of swinging, hoisting or lowering, wind conditions, as well as adverse operating conditions and physical machine depreciation. Refer to operators manual for operating guidelines.

OPERATING RADIUS. Operating radius is horizontal distance from axis of rotation to center of vertical hoist line or load block. Boom angle is angle between horizontal and centerline of boom butt and inserts, and is an indication of operating radius. In all cases, operating radius shall govern capacity.

BOOM POINT ELEVATION. Boom point elevation is vertical distance from ground level to centerline of boom point shaft.

MACHINE EQUIPMENT. Machine equipped with Manitowoc 10 x 6 carrier, 277 in. wheel base, 117 in. front axle track, 100 in. rear axle track, 14.00 x 24 tires, 96 in. front outriggers, 70 in. rear outriggers, two 12 in. boom hoist cylinders, 26 ft. mast, two boom support straps, crane counterweight as specified and with 25,000 lb. front bumper counterweight.

DEDUCTIONS FOR LOAD HANDLING DEVICES

Sheave Block (200 Ton)	5,000 pounds
Sheave Block (45 Ton)	1,500 pounds
Ball (30 Ton)	1,200 pounds
Ball (15 Ton)	900 pounds
Upper Boom Point	1,200 pounds

WIRE ROPE

Line Pull (Main)	32,500 pounds
Line Pull (Auxiliary)	29,500 pounds
Hoist Line	2 pounds per foot

LIFTCRANE JIB CAPACITIES

**JIB NO. 134 WITH 12 FT. 6 IN. STRUT ON
 BOOM NO. 78T WITH HEAVY LIFT TOP
 95,400 LB. CRANE COUNTERWEIGHT
 25,000 LB. FRONT BUMPER COUNTERWEIGHT
 360 DEG. RATING ON FULLY EXTENDED OUTRIGGERS**

LIFTING CAPACITIES. Chart supplements boom capacity chart No. 8063-A. Lifting capacities for various boom lengths, jib lengths and jib operating radii are for freely suspended loads and do not exceed 85% of a static tipping load. Capacities based on structural competence are denoted by an asterisk (*).

Weight of all load blocks, hooks, weight ball, slings, hoist lines, etc., beneath boom and jib point sheaves, is considered part of the jib load. Boom and jib are not to be lowered beyond radii where combined weights are greater than rated capacity. Where no capacity is shown, operation is not intended or approved.

OPERATING CONDITIONS. Machine to operate in a level position on a firm uniformly supporting surface with outriggers fully extended (22 ft. 8 in.) and set. Refer to the operators manual for outrigger positioning. Radii less than 32 feet not recommended when lifting over front of truck. Minimum boom angle over truck cab is 24 degrees.

Note: Set four main jacks first, then lower center front jack until it just contacts ground to prevent preloading of center front jack. Center front jack must be used when operating on outriggers.

Refer to boom rigging No. 192043, jib assembly No. 179331, Wire Rope Specification chart No. 7973-A and Operating Range Diagram chart No. 7974-A. Crane operator judgement must be used to allow for dynamic load effects of swinging, hoisting or lowering, wind conditions, as well as adverse operating conditions and physical machine depreciation. Refer to operators manual for operating guidelines.

OPERATING RADIUS. Operating radius is horizontal distance from axis of rotation to center of vertical hoist line or load block. Boom angle is angle between horizontal and centerline of boom butt and inserts, and is an indication of operating radius. In all cases, operating radius shall govern capacity.

JIB POINT ELEVATION. Jib point elevation is vertical distance from ground level to centerline of jib point shaft.

MACHINE EQUIPMENT. Machine equipped with Manitowoc 10 x 6 carrier, 277 in. wheel base, 117 in. front axle track, 100 in. rear axle track, 14.00 x 24 tires, 96 in. front outriggers, 70 in. rear outriggers, two 12 in. boom hoist cylinders, 26 ft. mast, two boom support straps, 95,400 lb. crane counterweight and 25,000 lb. front bumper counterweight.

Maximum capacity on 26 mm or 1 in. wire rope is 29,500 lbs. per line (20,000 lbs. when auxiliary drum is used).

DEDUCTIONS FROM CAPACITIES WHEN JIB ATTACHED

Jib Length (Feet)	Jib No. 134 (Pounds)
30	3,900
40	4,700
50	5,600
60	6,600
70	7,600
80	8,700

The information on this page is for classroom use only.

Manitowoc Cranes, Inc.

Manitowoc, Wisconsin 54220 U.S.A.



777T

Liftcrane Boom Capacities

Meets
ANSI B30.5
Requirements

Boom No. 78T With Heavy Lift Top
0 Lb. to 95,400 Lb. Crane Counterweight
With 25,000 Lb. Front Bumper Counterweight
Rating Over Rear or 360 Degrees On Fully Extended Outriggers



130 Ft. Boom



Oper. Rad. Feet	Boom Ang. Deg.	Boom Point Elev. Feet	27,400 Lb. Crane Cwt. 25,000 Lb. Bumper Cwt.		10,400 Lb. Crane Cwt. 25,000 Lb. Bumper Cwt.		0 Lb. Crane Cwt. 25,000 Lb. Bumper Cwt.		Oper. Rad. Feet
			Boom Capacity 360 Deg. Pounds	Boom Capacity Rear Pounds	Boom Capacity 360 Deg. Pounds	Boom Capacity Rear Pounds	Boom Capacity 360 Deg. Pounds	Boom Capacity Rear Pounds	
22	82.9	137.8	178,100*	178,100*	170,100*	170,100*	155,300	162,200*	22
24	82.0	137.5	165,700*	165,700*	149,300	154,000*	128,600	146,800*	24
26	81.1	137.1	151,300*	151,300*	127,000	140,500*	109,200	133,900*	26
28	80.2	136.8	135,900	139,000*	110,100	129,000*	94,400	122,900*	28
30	79.3	136.4	119,900	128,400*	96,800	119,100*	82,800	113,400*	30
32	78.4	135.9	106,900	119,200*	86,100	110,500*	73,400	105,200*	32
34	77.5	135.5	96,300	111,100*	77,300	103,000*	65,700	98,000*	34
36	76.6	135.0	87,300	104,000*	69,900	96,300*	59,300	91,600*	36
38	75.7	134.4	79,700	97,600*	63,600	90,300*	53,800	85,900*	38
40	74.8	133.9	73,200	91,900*	58,200	85,000*	49,100	80,800*	40
45	72.5	132.3	60,200	79,900*	47,500	73,800*	39,700	70,000*	45
50	70.1	130.5	50,600	70,300*	39,500	64,800*	32,700	60,900	50
55	67.7	128.5	43,200	62,500*	33,400	57,600*	27,400	52,300	55
60	65.3	126.2	37,300	56,100*	28,500	50,800	23,100	45,400	60
65	62.8	123.6	32,500	50,600*	24,500	44,800	19,600	39,800	65
70	60.3	120.8	28,500	46,000*	21,200	39,700	16,700	35,200	70
75	57.7	117.7	25,100	41,900*	18,400	35,400	14,300	31,300	75
80	55.0	114.2	22,200	38,100	16,000	31,800	12,200	27,900	80
85	52.2	110.4	19,700	34,500	13,900	28,600	10,300	25,000	85
90	49.4	106.2	17,600	31,400	12,100	25,900	8,800	22,500	90
95	46.3	101.5	15,600	28,600	10,500	23,400	7,300	20,300	95
100	43.1	96.2	13,900	26,200	9,000	21,300	6,100	18,300	100
105	39.7	90.3	12,300	23,900	7,800	19,300	5,000	16,500	105
110	36.1	83.7	10,900	21,900	6,600	17,600	3,900	14,900	110
115	32.0	76.0	9,700	20,100	5,500	16,000	3,000	13,400	115
120	27.4	66.8	8,500	18,500	4,500	14,500	2,100	12,100	120
125	21.9	55.4	7,400	16,900	3,600	13,100		10,800	125
130	14.4	39.1	6,300	15,500	2,700	11,800		9,600	130

Manitowoc Cranes, Inc.

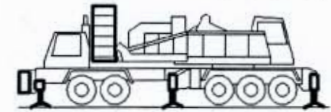
Manitowoc, Wisconsin 54220 U.S.A.



Liftcrane Boom Capacities

Meets
ANSI B30.5
Requirements

Boom No. 78T With Heavy Lift Top
0 Lb. to 95,400 Lb. Crane Counterweight
With 25,000 Lb. Front Bumper Counterweight
Rating Over Rear or 360 Degrees On Fully Extended Outriggers



140 Ft. Boom



Oper. Rad. Feet	Boom Ang. Deg.	Boom Point Elev. Feet	95,400 Lb. Crane Cwt. 25,000 Lb. Bumper Cwt.		78,400 Lb. Crane Cwt. 25,000 Lb. Bumper Cwt.		61,400 Lb. Crane Cwt. 25,000 Lb. Bumper Cwt.		44,400 Lb. Crane Cwt. 25,000 Lb. Bumper Cwt.		Oper. Rad. Feet
			Boom Capacity 360 Deg. Pounds	Boom Capacity Rear Pounds	Boom Capacity 360 Deg. Pounds	Boom Capacity Rear Pounds	Boom Capacity 360 Deg. Pounds	Boom Capacity Rear Pounds	Boom Capacity 360 Deg. Pounds	Boom Capacity Rear Pounds	
24	82.6	147.6	160,600*	160,600*	160,600*	160,600*	160,600*	160,600*	160,600*	160,600*	24
26	81.7	147.3	153,300*	153,300*	153,300*	153,300*	153,300*	153,300*	153,300*	153,300*	26
28	80.9	146.9	145,700*	145,700*	145,700*	145,700*	145,700*	145,700*	145,700*	145,700*	28
30	80.1	146.6	138,700*	138,700*	138,700*	138,700*	138,700*	138,700*	137,400*	137,400*	30
32	79.2	146.2	132,200*	132,200*	132,200*	132,200*	132,200*	132,200*	127,600*	127,600*	32
34	78.4	145.7	126,200*	126,200*	126,200*	126,200*	126,200*	126,200*	115,300	119,000*	34
36	77.6	145.3	120,600*	120,600*	120,600*	120,600*	119,100*	119,100*	104,800	111,400*	36
38	76.7	144.8	115,000*	115,000*	115,000*	115,000*	111,900*	111,900*	95,800	104,600*	38
40	75.9	144.3	109,800*	109,800*	109,800*	109,800*	103,100	105,400*	88,100	98,500*	40
45	73.7	142.8	98,300*	98,300*	97,900*	97,900*	85,700	91,800*	72,900	85,700*	45
50	71.6	141.2	88,700*	88,700*	83,900	86,500*	72,700	81,000*	61,600	75,500*	50
55	69.4	139.3	80,400*	80,400*	72,600	77,200*	62,800	72,200*	52,900	67,200*	55
60	67.2	137.2	72,500	73,200*	63,600	69,400*	54,800	64,900*	46,000	60,300*	60
65	64.9	134.9	64,400	66,900*	56,400	62,900*	48,300	58,700*	40,300	54,500*	65
70	62.6	132.3	57,600	61,200*	50,300	57,300*	43,000	53,400*	35,600	49,500*	70
75	60.3	129.5	52,000	56,100*	45,200	52,500*	38,400	48,900*	31,700	45,200*	75
80	57.9	126.4	47,100	51,700*	40,800	48,300*	34,600	44,900*	28,300	41,500*	80
85	55.4	122.9	42,900	47,800*	37,100	44,600*	31,200	41,400*	25,400	38,200*	85
90	52.8	119.2	39,200	44,300*	33,700	41,300*	28,300	38,200*	22,800	35,200*	90
95	50.2	115.1	36,000	41,200*	30,800	38,300*	25,700	35,500*	20,600	32,600*	95
100	47.4	110.5	33,100	38,400*	28,200	35,600*	23,400	32,900*	18,500	30,200*	100
105	44.5	105.5	30,500	35,700*	25,900	33,200*	21,300	30,700*	16,700	28,100*	105
110	41.5	100.0	28,200	33,300*	23,800	31,000*	19,500	28,600*	15,100	26,100*	110
115	38.2	93.8	26,100	31,000*	21,900	29,000*	17,800	26,700*	13,600	24,100	115
120	34.7	86.8	24,200	28,900*	20,200	27,200*	16,200	24,900*	12,300	22,300	120
125	30.8	78.7	22,400	26,900*	18,600	25,500*	14,800	23,300*	11,000	20,600	125
130	26.4	69.1	20,800	25,100*	17,100	23,900*	13,500	21,800*	9,900	19,100	130
135	21.1	57.2	19,200	23,400*	15,800	22,400*	12,300	20,400*	8,800	17,600	135
140	13.9	40.3	17,800	21,800*	14,400	21,000*	11,100	19,100*	7,700	16,200	140

Manitowoc Cranes, Inc.

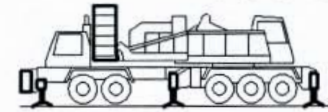
Manitowoc, Wisconsin 54220 U.S.A.



Liftcrane Boom Capacities

Meets
ANSI B30.5
Requirements

Boom No. 78T With Heavy Lift Top
0 Lb. to 95,400 Lb. Crane Counterweight
With 25,000 Lb. Front Bumper Counterweight
Rating Over Rear or 360 Degrees On Fully Extended Outriggers



150 Ft. Boom



Oper. Rad. Feet	Boom Ang. Deg.	Boom Point Elev. Feet	95,400 Lb. Crane Cwt. 25,000 Lb. Bumper Cwt.		78,400 Lb. Crane Cwt. 25,000 Lb. Bumper Cwt.		61,400 Lb. Crane Cwt. 25,000 Lb. Bumper Cwt.		44,400 Lb. Crane Cwt. 25,000 Lb. Bumper Cwt.		Oper. Rad. Feet
			Boom Capacity 360 Deg. Pounds	Boom Capacity Rear Pounds	Boom Capacity 360 Deg. Pounds	Boom Capacity Rear Pounds	Boom Capacity 360 Deg. Pounds	Boom Capacity Rear Pounds	Boom Capacity 360 Deg. Pounds	Boom Capacity Rear Pounds	
26	82.3	157.4	161,100*	161,100*	161,100*	161,100*	161,100*	161,100*	161,100*	161,100*	26
28	81.5	157.1	155,100*	155,100*	155,100*	155,100*	155,100*	155,100*	148,200*	148,200*	28
30	80.7	156.7	148,000*	148,000*	148,000*	148,000*	146,200*	146,200*	136,900*	136,900*	30
32	80.0	156.4	138,900*	138,900*	138,900*	138,900*	135,700*	135,700*	127,000*	127,000*	32
34	79.2	156.0	130,900*	130,900*	130,900*	130,900*	126,600*	126,600*	115,200	118,400*	34
36	78.4	155.5	123,900*	123,900*	123,900*	123,900*	118,500*	118,500*	104,700	110,800*	36
38	77.6	155.1	117,600*	117,600*	117,600*	117,600*	111,300*	111,300*	95,700	104,000*	38
40	76.8	154.6	112,000*	112,000*	111,700*	111,700*	102,900	104,800*	87,900	97,900*	40
45	74.9	153.2	100,200*	100,200*	97,300*	97,300*	85,400	91,200*	72,600	85,100*	45
50	72.9	151.7	90,700*	90,700*	83,500	85,800*	72,400	80,400*	61,300	74,900*	50
55	70.8	150.0	81,500*	81,500*	72,200	76,500*	62,400	71,500*	52,500	66,600*	55
60	68.8	148.1	72,000	73,300*	63,200	68,800*	54,400	64,200*	45,500	59,700*	60
65	66.7	145.9	63,900	66,500*	55,900	62,300*	47,900	58,100*	39,900	53,900*	65
70	64.6	143.6	57,100	60,600*	49,800	56,700*	42,500	52,800*	35,100	48,900*	70
75	62.5	141.0	51,400	55,500*	44,700	51,800*	37,900	48,200*	31,200	44,600*	75
80	60.3	138.1	46,600	51,000*	40,300	47,600*	34,000	44,200*	27,800	40,800*	80
85	58.0	135.0	42,300	47,100*	36,500	43,900*	30,700	40,700*	24,800	37,500*	85
90	55.7	131.7	38,700	43,600*	33,200	40,600*	27,700	37,600*	22,300	34,600*	90
95	53.3	128.0	35,400	40,500*	30,300	37,600*	25,100	34,800*	20,000	31,900*	95
100	50.9	123.9	32,500	37,700*	27,700	35,000*	22,800	32,300*	18,000	29,600*	100
105	48.3	119.6	29,900	35,200*	25,300	32,600*	20,800	30,000*	16,200	27,400*	105
110	45.7	114.7	27,600	32,800*	23,200	30,400*	18,900	27,900*	14,500	25,500*	110
115	42.9	109.5	25,500	30,700*	21,400	28,400*	17,200	26,000*	13,100	23,600	115
120	40.0	103.6	23,600	28,800*	19,600	26,500*	15,700	24,300*	11,700	21,700	120
125	36.8	97.1	21,800	27,000*	18,000	24,800*	14,300	22,700*	10,500	20,000	125
130	33.4	89.7	20,200	25,400*	16,600	23,300*	13,000	21,200*	9,300	18,500	130
135	29.7	81.3	18,700	23,800*	15,200	21,800*	11,700	19,800*	8,300	17,100	135
140	25.4	71.3	17,300	22,400*	14,000	20,400*	10,600	18,500*	7,300	15,700	140
145	20.3	58.9	16,000	21,000*	12,800	19,100*	9,600	17,100*	6,300	14,500	145
150	13.4	41.4	14,700	18,900*	11,600	17,900*	8,500	15,800*	5,400	13,300	150

Liftcrane Jib Capacities

Jib No. 134 With 12 Ft. 6 in. Strut On
 Boom No. 78T With Heavy Lift Top
 95,400 Lb. Crane Counterweight
 25,000 Lb. Front Bumper Counterweight
 360 Degree Rating On Fully Extended Outriggers

Meets
 ANSI B30.5
 Requirements



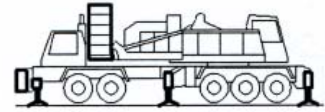
30 Ft. JIB

Jib Oper. Rad. Feet	5 Degree Offset			15 Degree Offset			25 Degree Offset			Jib Oper. Rad. Feet
	Boom Ang. Deg.	Jib Point Elev. Feet	Jib Capacity Pounds	Boom Ang. Deg.	Jib Point Elev. Feet	Jib Capacity Pounds	Boom Ang. Deg.	Jib Point Elev. Feet	Jib Capacity Pounds	
100 Ft. BOOM										
30	79.6	138.6	59,000 *							30
35	77.4	137.5	59,000 *	79.6	136.7	59,000*				35
40	75.1	136.2	59,000 *	77.4	135.4	58,600*	79.7	133.6	46,600*	40
45	72.8	134.6	59,000 *	75.1	133.8	57,500*	77.4	132.0	44,300*	45
50	70.5	132.9	59,000 *	72.8	132.1	56,600*	75.0	130.2	42,200*	50
55	68.2	130.9	58,600 *	70.4	130.1	55,700*	72.7	128.2	40,400*	55
60	65.8	128.7	57,500 *	68.0	127.8	54,800*	70.2	125.9	38,700*	60
65	63.4	126.2	56,400 *	65.6	125.3	54,100*	67.8	123.3	37,200*	65
70	60.9	123.4	55,400 *	63.1	122.5	53,400*	65.2	120.5	35,900*	70
75	58.4	120.3	53,600	60.6	119.4	52,100*	62.6	117.4	34,700*	75
80	55.8	117.0	48,800	57.9	116.0	49,500	59.9	113.9	33,600*	80
85	53.1	113.2	44,500	55.2	112.3	45,200	57.1	110.1	32,500*	85
90	50.3	109.1	40,900	52.4	108.1	41,400	54.2	105.8	31,600*	90
100	44.3	99.5	34,700	46.3	98.4	35,200	48.0	95.8	30,100*	100
110	37.5	87.5	29,800	39.4	86.2	30,100	40.9	83.2	28,900*	110
120	29.4	71.7	25,700	31.1	70.0	26,000	32.2	66.2	26,100	120
130	18.1	47.6	22,300	19.3	45.0	22,400				130

Liftcrane Jib Capacities

Jib No. 134 With 12 Ft. 6 in. Strut On
 Boom No. 78T With Heavy Lift Top
 95,400 Lb. Crane Counterweight
 25,000 Lb. Front Bumper Counterweight
 360 Degree Rating On Fully Extended Outriggers

Meets
ANSI B30.5
Requirements



40 Ft. JIB

Jib Oper. Rad. Feet	5 Degree Offset			15 Degree Offset			25 Degree Offset			Jib Oper. Rad. Feet
	Boom Ang. Deg.	Jib Point Elev. Feet	Jib Capacity Pounds	Boom Ang. Deg.	Jib Point Elev. Feet	Jib Capacity Pounds	Boom Ang. Deg.	Jib Point Elev. Feet	Jib Capacity Pounds	
140 Ft. BOOM										
40	79.8	187.6	52,700*							40
45	78.1	186.5	51,500*	80.3	185.3	46,200*				45
50	76.5	185.2	50,500*	78.7	184.1	45,400*	81.0	181.5	37,800*	50
55	74.9	183.8	49,400*	77.1	182.6	44,600*	79.3	180.1	36,400*	55
60	73.2	182.3	48,500*	75.4	181.1	43,900*	77.6	178.5	35,100*	60
65	71.6	180.6	47,500*	73.7	179.4	43,200*	75.9	176.8	34,000*	65
70	69.9	178.7	46,600*	72.0	177.5	42,600*	74.2	174.9	32,900*	70
75	68.2	176.6	45,800*	70.3	175.4	42,000*	72.5	172.8	31,900*	75
80	66.5	174.4	45,000*	68.6	173.2	41,400*	70.7	170.5	30,900*	80
85	64.7	172.0	43,400*	66.8	170.7	40,800*	68.9	168.0	30,100*	85
90	63.0	169.4	40,500	65.1	168.1	39,500*	67.1	165.4	29,300*	90
100	59.3	163.6	34,300	61.4	162.3	34,700*	63.4	159.4	27,800*	100
110	55.5	156.9	29,300	57.6	155.5	30,000	59.5	152.5	26,500*	110
120	51.6	149.1	25,300	53.5	147.7	25,900	55.3	144.5	25,400*	120
130	47.3	140.2	21,900	49.3	138.6	22,400	51.0	135.2	22,900	130
140	42.8	129.7	19,100	44.7	128.0	19,500	46.2	124.3	19,800	140
150	37.8	117.3	16,600	39.6	115.5	16,900	41.0	111.3	17,200	150
160	32.1	102.3	14,500	33.8	100.1	14,700	34.9	95.2	14,900	160
170	25.2	83.0	12,600	26.7	80.2	12,700				170
180	15.6	54.1	10,800							180



777T

Liftcrane Jib Capacities

Jib No. 134 With 12 Ft. 6 in. Strut On
 Boom No. 78T With Heavy Lift Top
 95,400 Lb. Crane Counterweight
 25,000 Lb. Front Bumper Counterweight
 360 Degree Rating On Fully Extended Outriggers

Meets
 ANSI B30.5
 Requirements



40 Ft. JIB

Jib Oper. Rad. Feet	5 Degree Offset			15 Degree Offset			25 Degree Offset			Jib Oper. Rad. Feet
	Boom Ang. Deg.	Jib Point Elev. Feet	Jib Capacity Pounds	Boom Ang. Deg.	Jib Point Elev. Feet	Jib Capacity Pounds	Boom Ang. Deg.	Jib Point Elev. Feet	Jib Capacity Pounds	
150 Ft. BOOM										
40	80.3	197.7	52,800 *							40
45	78.8	196.7	51,900 *	80.9	195.5	46,500*				45
50	77.2	195.5	50,900 *	79.3	194.4	45,700*				50
55	75.7	194.2	49,900 *	77.8	193.0	45,000*	79.9	190.5	36,900*	55
60	74.1	192.7	48,900 *	76.2	191.6	44,200*	78.3	189.0	35,600*	60
65	72.6	191.1	48,000 *	74.6	189.9	43,600*	76.7	187.3	34,500*	65
70	71.0	189.4	47,200 *	73.0	188.2	42,900*	75.1	185.5	33,400*	70
75	69.4	187.4	46,300 *	71.4	186.2	42,300*	73.5	183.6	32,400*	75
80	67.8	185.4	45,600 *	69.8	184.1	41,800*	71.8	181.4	31,500*	80
85	66.2	183.1	43,600	68.2	181.8	41,200*	70.1	179.1	30,600*	85
90	64.5	180.7	39,900	66.5	179.4	38,600*	68.4	176.6	29,800*	90
100	61.1	175.3	33,700	63.1	173.9	34,000*	65.0	171.1	28,400*	100
110	57.6	169.0	28,700	59.5	167.7	29,500	61.3	164.7	27,100*	110
120	53.9	161.9	24,700	55.8	160.5	25,300	57.6	157.4	25,800*	120
130	50.1	153.7	21,300	51.9	152.2	21,800	53.6	148.9	22,300	130
140	46.0	144.3	18,400	47.8	142.7	18,900	49.4	139.2	19,300	140
150	41.6	133.4	16,000	43.3	131.7	16,400	44.8	127.8	16,700	150
160	36.7	120.6	13,800	38.4	118.6	14,100	39.6	114.3	14,400	160
170	31.2	105.0	11,900	32.8	102.7	12,200	33.7	97.6	12,300	170
180	24.5	85.1	10,200	25.9	82.1	10,400				180
190	15.2	55.4	8,700							190