

TECH  
SPEC

Courtesy of Broderon Manufacturing Corp.

# IC-80



### AT A GLANCE:

- Rated Capacity — 17,000 pounds
- Vertical Reach — 28' 0"
- Horizontal Reach — 24' 0"
- Continuous Rotation
- 10' 2" Turning Radius with  
Optional Four Wheel Steer
- Carry Deck
- Hydraulic Outriggers

**bmc BRODERON**  
Manufacturing Corp.

P.O. Box 14770, Lenexa, KS 66285-4770  
(913) 888-0606 • FAX (913) 541-0890

# BRODERSON IC-80-1D

## RATED LIFTING CAPACITIES IN POUNDS ALL CAPACITIES FOR 360 DEGREE ROTATION

LOAD RADIUS IN FEET	3-SECTION BOOM		10 FT BOOM EXTENSION INSTALLED	
	ON RUBBER	ON OUTRIGGERS	ON RUBBER	ON OUTRIGGERS
5	9,500	17,000	7,000	7,000
6	8,500	14,500	6,000	6,000
8	6,000	10,250	5,000	5,000
10	4,150	7,700	4,000	4,000
12	3,100	6,550	3,275	3,450
14	2,425	5,550	2,600	3,050
16	1,975	4,450	2,175	2,700
18	1,625	3,950	1,850	2,250
20	1,400	3,550	1,550	2,250
22			1,325	2,250
24			1,150	2,250
26			975	2,250
28			825	2,150
30			675	1,825

## NOTES

Capacities on outriggers are 85% of tipping loads.  
Capacities on rubber are 75% of tipping loads.

Capacities below **BOLD** line are limited by tipping.  
Other capacities are limited by structural or hydraulic capability.

Deck capacity 12,000 lb (centered over axle).

Personnel bucket capacity, outriggers extended, 300 lb per bucket, 600 lb total. The booms on this unit are all steel and have no line voltage rating.

Maximum hydraulic pressure is 3,000 psi.

Deduct 120 lb from all "on rubber" capacities when boom extension is stowed on base boom.

All capacities apply to operation on firm level surfaces.

The load hoist line on this unit must be 9/16" diameter 6 x 37 IWRC EIP wire rope with a minimum breaking strength of 31,500 lb.

Use single part load line for loads to 9,000 pounds.  
Use two part load line for loads to 17,000 pounds.

Operation:

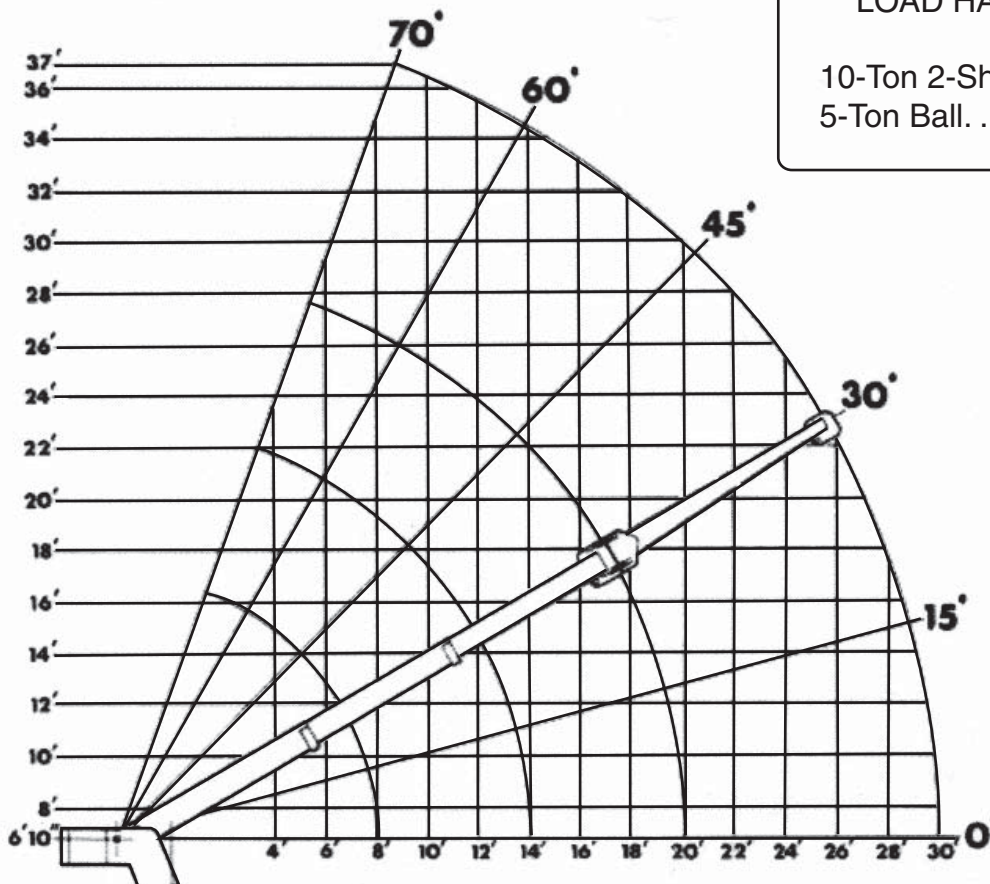
1. Read and understand owners manual before operating the crane.
2. Check level of hydraulic oil daily.
3. Check unit for visible effects and loose parts.
4. Start engine.
5. Set vehicle park brake securely.
6. Extend outriggers to solid footing.
7. Operate all hydraulic controls slowly and deliberately for smooth motion.

Carry capacity speed limit 3 mph.

Tire pressure 9.00 x 15-95 psi; 10.00 x 15-85 psi.

## DEDUCTIONS FOR LOAD HANDLING DEVICES

10-Ton 2-Sheave Block . . . 200 lbs  
5-Ton Ball. . . . . 150 lbs



# BRODERSON IC-80-2D

## RATED LIFTING CAPACITIES IN POUNDS

LOAD RADIUS IN FEET	3-SECTION BOOM		10 FT BOOM EXTENSION INSTALLED	
	ON RUBBER	ON OUTRIGGERS	ON RUBBER	ON OUTRIGGERS
5	9,500	17,000	7,000	7,000
6	8,500	14,500	6,000	6,000
8	6,000	10,250	5,000	5,000
10	4,150	7,700	4,000	4,000
12	3,025	6,550	3,275	3,450
14	2,350	5,550	2,600	3,050
16	1,850	4,450	2,125	2,700
18	1,550	3,950	1,800	2,250
20	1,300	3,250	1,525	2,250
22	1,100	2,875	1,275	2,250
24	925	2,475	1,050	2,250
26			850	2,250
28			700	2,000
30			600	1,775
32			525	1,625
34			450	1,400

## NOTES

Capacities on outriggers are 85% of tipping loads.  
Capacities on rubber are 75% of tipping loads.

Capacities below bold line are limited by tipping.  
Other capacities are limited by structural or hydraulic capability.

Deck capacity 12,000 lb (centered over axle).

Personnel bucket capacity, outriggers extended, 300 lb per bucket, 600 lb total. The booms on this unit are all steel and have no line voltage rating.

Maximum hydraulic pressure is 3,000 psi.

Deduct 120 lb from all "on rubber" capacities when boom extension is stowed on base boom.

All capacities apply to operation on firm level surfaces.

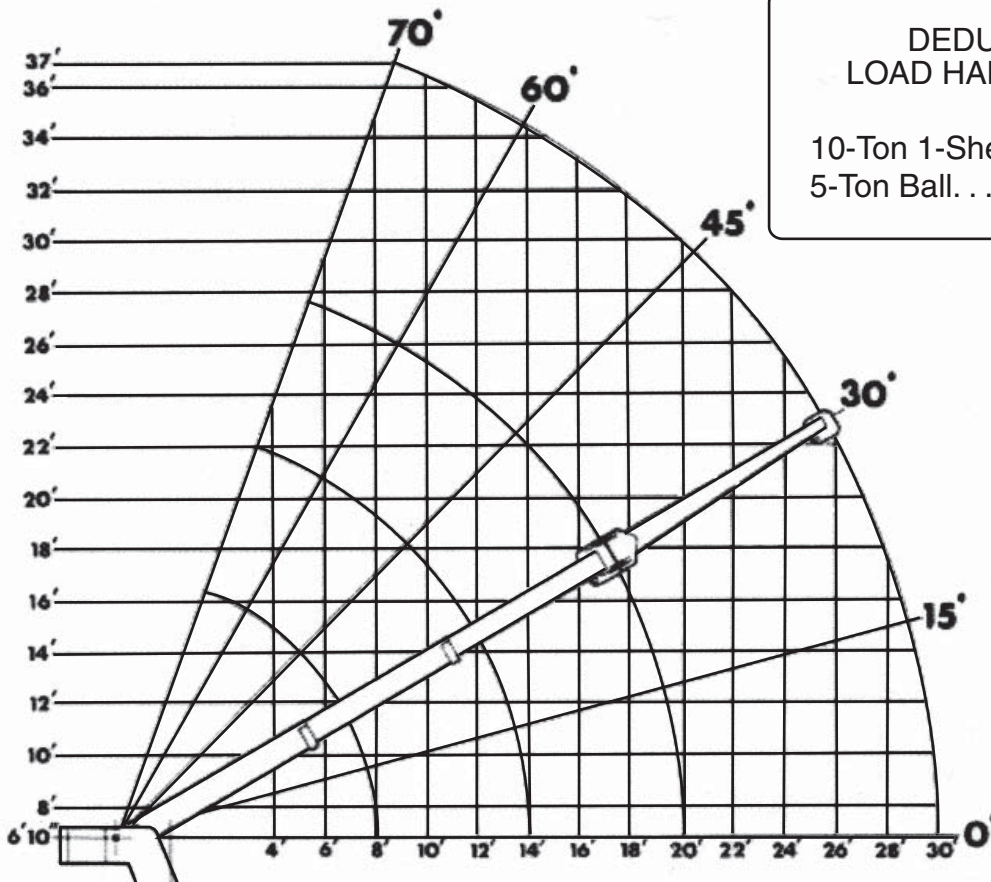
The load hoist line on this unit must be 9/16" diameter 6 x 37 IWRC EIP wire rope or equivalent with a minimum breaking strength of 31,500 lb.

Use single part load line for loads to 9,000 pounds.  
Use two part load line for loads to 17,000 pounds.

### Operation:

1. Read and understand owners manual before operating the crane.
2. Check level of hydraulic oil daily.
3. Check unit for visible effects and loose parts.
4. Start engine.
5. Set vehicle park brake securely.
6. Extend outriggers to solid footing.
7. Operate all hydraulic controls slowly and deliberately for smooth motion.

Carry capacity speed limit 3 mph.



## DEDUCTIONS FOR LOAD HANDLING DEVICES

10-Ton 1-Sheave Block . . . 200 lbs  
5-Ton Ball. . . . . 150 lbs