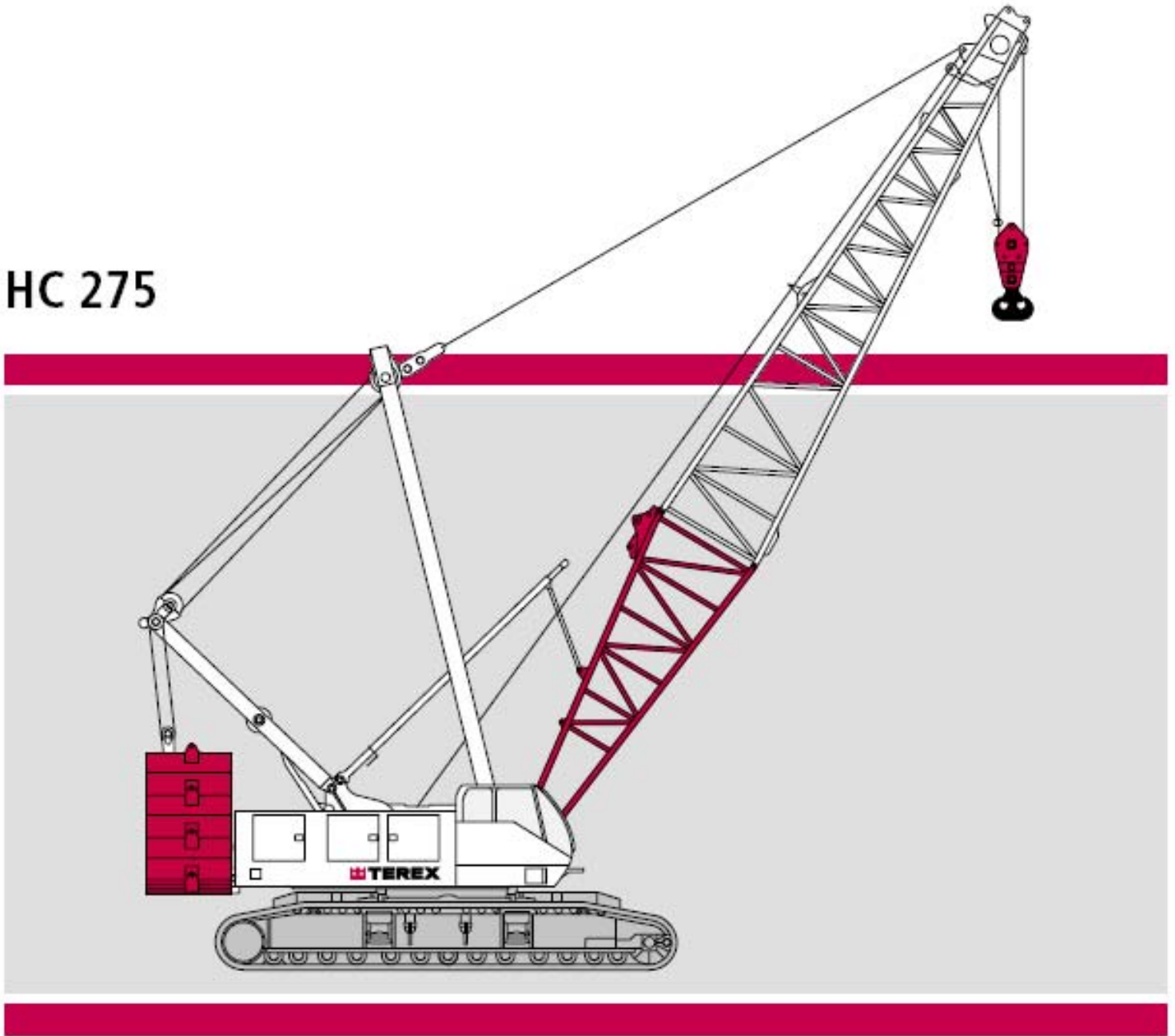


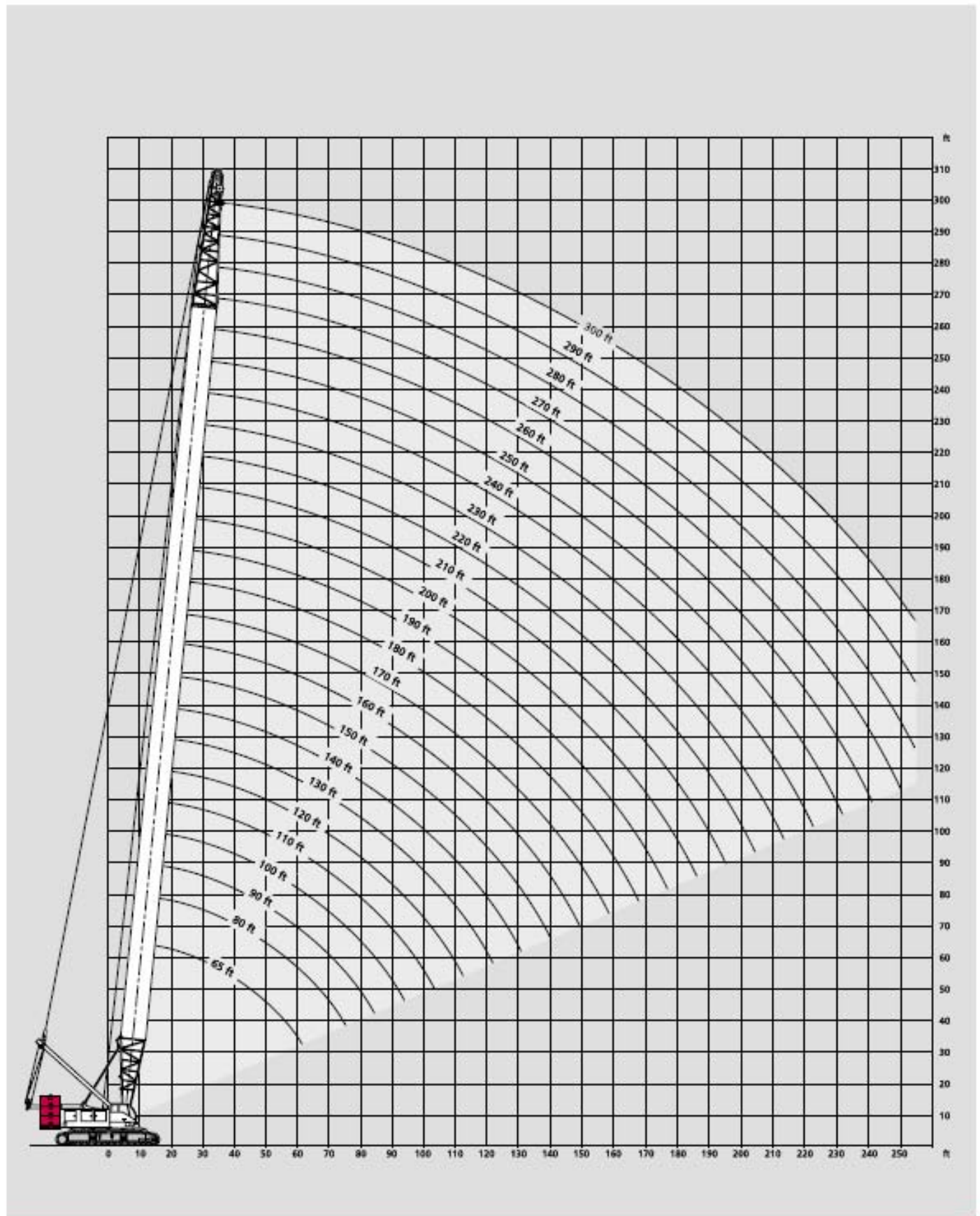
Courtesy of Terex



HC 275



# Range Diagram 92HI Boom



# American HC 275 • Hydraulic Crawler Crane • 92 HI Boom

## Crane Rating Data

Ratings in this chart (on next page) are in pounds and do not exceed the percentage of tipping specified for this crane by ANSI B30.5. All ratings require that the crane be standing level on a firm uniformly supporting surface.

Do not lift loads in excess of those shown on this chart. Lifting loads in excess of those shown, or operation not in accordance with good operating practice, including limitations shown on page 3499 of the Operator's Manual, can cause tipping, structural damage or catastrophic failure.

Asterisk (\*) areas on this chart indicate ratings which are limited by strength of material or factors other than stability (tipping).

"Radius in Feet" is the horizontal distance at ground level from the crane centerline of rotation to a vertical line through the center of gravity of the suspended load.

When using the main boom fall with jib in place, the main fall ratings must be reduced by the jib effective weight shown on the jib rating chart plus twice the weight of all suspended blocks, slings, rope, etc. at the jib fall.

Blocks, slings, buckets and other load carrying devices are considered part of the load. The weight of standard hoisting ropes for the rating at a given radius has been calculated as part of the boom point load and need not be considered in determining net allowable loads.

Ratings shown in this chart (on next page) make no allowance for such factors as out of plumb loads, wind, poor soil conditions and dynamic effects due to excessive operating speeds. The user (operator) must exercise judgement to make allowance for these conditions.

No account is taken of the wind force on the load. This effect, which can be substantial for loads with large surface areas, must be considered by the user. In any wind it is strongly recommended that tag lines be used to control the load.

Combinations of boom or boom and jib with a total length exceeding 350 feet can be operated at full rated capacity only in wind speeds of 15 mph or less. If lifts are to be performed in winds between 15 mph and 25 mph, ratings must be reduced 10%. No operation of the above combinations should be attempted in wind speeds over 25 mph. The above limitations do not take into account loads with excessive surface area which are not restrained by tag lines.

## Load Hoisting Information

Maximum Lifting Capacity in Pounds	Minimum Parts of Load Line	Maximum Hoisting Distance in Feet	
		Main Hoist	Auxiliary Hoist
550,000	14	90	90
490,280	12	105	105
449,420	11	110	110
408,570	10	130	130
367,710	9	145	145
326,850	8	160	160
286,000	7	185	185
245,140	6	215	215
204,280	5	260	260
163,420	4	325	325
122,570	3	435	435
81,710	2	655	655
40,850	1	1,310	1,310

## Boom Composition

Boom Length in Feet	25 Ft	15 Ft	20 Ft	10 Ft	50 Ft	40 Ft
	92 HI Inner	92 HT Center	92 HT Center	92 ST Center	92 ST Center	92 H Outer
65	1	0	0	0	0	1
80	1	1	0	0	0	1
90	1	1	0	1	0	1
100	1	1	1	0	0	1
110	1	1	1	1	0	1
120	1	1	1	2	0	1
130	1	1	0	0	1	1
140	1	1	0	1	1	1
150	1	1	1	0	1	1
160	1	1	1	1	1	1

## Deductions for Load Handling Devices

35 ft Jib . . . . .	4,035 lbs
40-Ton 1-Sheave Block . . . . .	600 lbs
90-Ton 3-Sheave Block . . . . .	1,800 lbs
15-Ton Ball . . . . .	650 lbs
Hoist Line . . . . .	2.5 lb/ft

The information on this page is for classroom use only.

# With 92HI Offset Tip Boom

195 klb + 64 klb CB 

360°

ANSI B 30.5  
DIN/ISO

65' (21.3 m) Boom length			
Radius (Feet)	Boom Angle (Degrees)	360 Degree Rating (Pounds)	From Boom Pt. to Ground (Feet)
16	81.4	550,000 *	77
20	77.8	438,430 *	76
25	73.2	350,740 *	75
30	68.5	292,250 *	74
35	63.6	232,570	72
40	58.5	191,980	69
50	47.2	141,340	62
60	33.1	111,040	52

80' (24.4 m) Boom length			
Radius (Feet)	Boom Angle (Degrees)	360 Degree Rating (Pounds)	From Boom Pt. to Ground (Feet)
18	81.6	486,730 *	87
20	80.1	438,040 *	86
25	76.4	350,420 *	85
30	72.7	291,950 *	84
35	68.9	232,830	82
40	64.9	192,200	80
50	56.6	141,520	74
60	47.4	111,220	67
70	36.5	90,940	55
80	21.0	76,540	36

90' (27.4 m) Boom length			
Radius (Feet)	Boom Angle (Degrees)	360 Degree Rating (Pounds)	From Boom Pt. to Ground (Feet)
19	81.8	460,720 *	97
20	81.2	437,780 *	97
25	78.0	350,200 *	96
30	74.7	291,750 *	94
35	71.3	232,570	93
40	67.9	191,940	91
50	60.8	141,230	86
60	53.1	110,930	80
70	44.5	90,640	71
80	34.2	76,270	58
90	19.7	65,390	38

100' (30.5 m) Boom length			
Radius (Feet)	Boom Angle (Degrees)	360 Degree Rating (Pounds)	From Boom Pt. to Ground (Feet)
21	81.5	416,560 *	107
25	79.2	349,990 *	106
30	76.2	291,560 *	105
35	73.3	232,180	103
40	70.2	191,530	102
50	64.0	140,800	98
60	57.3	110,500	92
70	50.1	90,190	84
80	42.1	75,850	75
90	32.4	64,980	61
100	18.6	56,510	40

110' (33.5 m) Boom length			
Radius (Feet)	Boom Angle (Degrees)	360 Degree Rating (Pounds)	From Boom Pt. to Ground (Feet)
22	81.8	397,510 *	117
25	80.2	349,770 *	116
30	77.5	291,370 *	115
35	74.8	231,840	114
40	72.1	191,170	112
50	66.5	140,420	109
60	60.6	110,120	104
70	54.4	89,800	97
80	47.6	75,490	89
90	40.0	64,610	78
100	30.8	56,140	64
110	17.7	49,370	41

120' (36.6 m) Boom length			
Radius (Feet)	Boom Angle (Degrees)	360 Degree Rating (Pounds)	From Boom Pt. to Ground (Feet)
23	82.0	373,770 *	126
25	81.0	349,560 *	126
30	78.6	291,180 *	125
35	76.1	231,450	124
40	73.6	190,780	123
50	68.6	140,010	119
60	63.3	109,710	115
70	57.8	89,380	109
80	51.9	75,080	102
90	45.5	64,200	93
100	38.2	55,730	82
110	29.4	48,960	67
120	16.9	43,430	43

130' (39.6 m) Boom length			
Radius (Feet)	Boom Angle (Degrees)	360 Degree Rating (Pounds)	From Boom Pt. to Ground (Feet)
25	81.7	321,040 *	136
30	79.5	287,400 *	135
35	77.2	231,430	134
40	74.9	190,760	133
50	70.3	140,010	130
60	65.5	109,740	126
70	60.5	89,410	121
80	55.3	75,140	115
90	49.7	64,250	107
100	43.6	55,790	97
110	36.6	49,020	85
120	28.2	43,490	69
130	16.2	38,980	44

140' (42.7 m) Boom length			
Radius (Feet)	Boom Angle (Degrees)	360 Degree Rating (Pounds)	From Boom Pt. to Ground (Feet)
26	81.9	297,000 *	146
30	80.2	281,420 *	146
35	78.1	231,040	145
40	76.0	190,370	144
50	71.8	139,590	141
60	67.4	109,320	137
70	62.8	88,970	132
80	58.1	74,720	127
90	53.1	63,820	120
100	47.8	55,360	111
110	41.9	48,590	101
120	35.2	43,060	88
130	27.2	38,600	72
140	15.6	34,660	45

150' (45.7 m) Boom length			
Radius (Feet)	Boom Angle (Degrees)	360 Degree Rating (Pounds)	From Boom Pt. to Ground (Feet)
28	81.7	292,420 *	156
30	80.9	275,620 *	156
35	78.9	230,610	155
40	77.0	189,910	154
50	73.0	139,110	151
60	69.0	108,840	148
70	64.8	88,460	143
80	60.5	74,230	138
90	55.9	63,320	132
100	51.2	54,850	124
110	46.0	48,080	116
120	40.4	42,540	105
130	34.0	38,120	91
140	26.2	34,200	74
150	15.1	30,820	47

# With 92HI Offset Tip Boom

195 klb + 64 klb CB 

360°

ANSI B 30.5  
DIN/ISO

## 160' (48.8 m) Boom length

Radius (Feet)	Boom Angle (Degrees)	360 Degree Rating (Pounds)	From Boom Pt. to Ground (Feet)
29	81.8	270,330 *	166
30	81.5	268,190 *	166
35	79.6	227,390 *	165
40	77.8	189,490	164
50	74.1	138,670	162
60	70.3	108,380	158
70	66.5	88,000	154
80	62.5	73,780	150
90	58.3	62,870	144
100	54.0	54,390	137
110	49.4	47,610	129
120	44.5	42,070	120
130	39.0	37,680	108
140	32.8	33,760	94
150	25.3	30,390	76
160	14.6	27,470	48

## 190' (57.9 m) Boom length

Radius (Feet)	Boom Angle (Degrees)	360 Degree Rating (Pounds)	From Boom Pt. to Ground (Feet)
33	81.9	199,300 *	196
35	81.3	197,990 *	195
40	79.8	186,320 *	195
50	76.7	137,580	193
60	73.6	107,310	190
70	70.4	86,890	187
80	67.1	72,720	183
90	63.8	61,800	178
100	60.4	53,300	173
110	56.8	46,510	167
120	53.1	40,960	160
130	49.2	36,670	152
140	45.1	32,760	142
150	40.6	29,390	131
160	35.7	26,470	118
170	30.0	23,920	103
180	23.2	21,670	82
190	13.3	18,900 *	51

## 170' (51.8 m) Boom length

30	82.0	249,690 *	176
35	80.3	223,060 *	175
40	78.5	189,050	174
50	75.1	138,210	172
60	71.5	107,930	169
70	67.9	87,530	165
80	64.2	73,320	161
90	60.4	62,400	155
100	56.4	53,910	149
110	52.3	47,140	142
120	47.8	41,590	134
130	43.0	37,240	124
140	37.8	33,310	112
150	31.8	29,940	97
160	24.6	27,030	78
170	14.1	24,460	49

## 200' (61.0 m) Boom length

35	81.7	193,970 *	206
40	80.3	183,030 *	205
50	77.4	137,100	203
60	74.4	106,830	200
70	71.4	86,380	197
80	68.3	72,230	194
90	65.2	61,290	189
100	62.0	52,790	184
110	58.7	46,000	179
120	55.3	40,440	172
130	51.7	36,180	165
140	47.9	32,250	156
150	43.9	28,890	146
160	39.5	25,960	135
170	34.7	23,410	122
180	29.2	21,160	105
190	22.6	19,160	84
200	13.0	16,120 *	53

## 180' (54.9 m) Boom length

32	81.8	215,060 *	186
35	80.8	212,500 *	185
40	79.2	188,840	184
50	75.9	138,010	182
60	72.6	107,760	179
70	69.2	87,350	176
80	65.8	73,170	172
90	62.2	62,250	167
100	58.5	53,770	161
110	54.7	46,990	155
120	50.7	41,440	147
130	46.4	37,130	138
140	41.8	33,200	128
150	36.7	29,840	115
160	30.9	26,910	100
170	23.8	24,370	80
180	13.7	21,830 *	50

## 210' (64.0 m) Boom length

36	81.8	174,640 *	216
40	80.7	174,640 *	215
50	78.0	136,630	213
60	75.2	106,370	211
70	72.3	85,910	208
80	69.4	71,760	204
90	66.5	60,810	200
100	63.4	52,310	195
110	60.3	45,510	190
120	57.1	40,360	184
130	53.8	35,710	177
140	50.3	31,780	169
150	46.7	28,410	160
160	42.7	25,500	150
170	38.5	22,940	138
180	33.8	20,690	125
190	28.5	18,690	108
200	22.0	16,910	86
210	12.6	13,590 *	54

# With 92HI Offset Tip Boom, 16HL Jib

195 klb + 64 klb CB 

360°

ANSI B 30.5  
DIN/ISO

## 40' (12.2 m) Jib length

Boom length	Jib Radius (Feet)	5.0 Deg offset		15.0 Deg offset		25.0 Deg offset	
		Boom Angle	Rating (Pounds)	Boom Angle	Rating (Pounds)	Boom Angle	Rating (Pounds)
190' (57.9 m)	41	81.9	32,000*	-	-	-	-
	50	79.6	32,000*	81.3	32,000*	-	-
	60	77.1	32,000*	78.7	32,000*	80.3	32,000*
	70	74.5	32,000*	76.2	32,000*	77.7	29,920*
	80	71.9	32,000*	73.6	32,000*	75.0	27,900*
	90	69.3	32,000*	70.9	32,000*	72.4	26,270*
	100	66.6	32,000*	68.2	32,000*	69.7	24,770*
	110	63.9	32,000*	65.5	31,500*	66.9	23,470*
	120	61.1	32,000*	62.6	29,410*	64.0	22,360*
	130	58.2	32,000*	59.7	27,680*	61.1	21,370*
140	55.2	31,780*	56.7	26,220*	58.0	20,480*	
150	52.1	29,840*	53.6	24,840*	54.9	19,720*	
160	48.9	27,270	50.3	23,620*	51.5	19,050*	
170	45.4	24,760	46.9	22,640*	48.0	18,490*	
180	41.8	22,560	43.2	21,730*	44.3	18,020*	
190	37.9	20,620	39.2	20,630	40.2	17,590*	

200' (61.0 m)	42	82.0	32,000*	-	-	-	-
	50	80.0	32,000*	81.6	32,000*	-	-
	60	77.6	32,000*	79.2	32,000*	80.7	32,000*
	70	75.2	32,000*	76.8	32,000*	78.2	30,350*
	80	72.7	32,000*	74.3	32,000*	75.7	28,360*
	90	70.2	32,000*	71.7	32,000*	73.2	26,650*
	100	67.6	32,000*	69.2	32,000*	70.6	25,160*
	110	65.0	32,000*	66.6	32,000*	67.9	23,930*
	120	62.4	32,000*	63.9	30,230*	65.2	22,730*
	130	59.7	32,000*	61.1	28,480*	62.4	21,770*
140	56.8	32,000*	58.3	26,890*	59.6	20,910*	
150	53.9	29,560	55.4	25,490*	56.6	20,090*	
160	50.9	26,690	52.3	24,300*	53.5	19,380*	
170	47.8	24,190	49.2	23,220*	50.3	18,800*	
180	44.4	21,980	45.8	21,980	46.9	18,260*	
190	40.9	20,030	42.2	20,030	43.2	17,810*	
200	37.0	18,290	38.3	18,300	39.3	17,450*	

210' (64.0 m)	44	81.8	32,000*	-	-	-	-
	50	80.4	32,000*	82.0	32,000*	-	-
	60	78.1	32,000*	79.6	32,000*	81.1	32,000*
	70	75.8	32,000*	77.3	32,000*	78.7	30,690*
	80	73.4	32,000*	74.9	32,000*	76.3	28,780*
	90	71.0	32,000*	72.5	32,000*	73.9	27,090*
	100	68.6	32,000*	70.1	32,000*	71.4	25,630*
	110	66.1	32,000*	67.6	32,000*	68.9	24,270*
	120	63.6	32,000*	65.0	31,010*	66.3	23,180*
	130	61.0	32,000*	62.4	29,260*	63.7	22,170*
140	58.3	32,000*	59.8	27,670*	61.0	21,300*	
150	55.6	29,020	57.0	26,200*	58.2	20,500*	
160	52.8	26,150	54.1	24,950*	55.3	19,740*	
170	49.8	23,640	51.2	23,640	52.3	19,130*	
180	46.7	21,430	48.1	21,440	49.1	18,550*	
190	43.5	19,470	44.8	19,470	45.8	18,080*	
200	40.0	17,730	41.3	17,740	42.2	17,720*	
210	36.2	16,170	37.5	16,180	38.3	16,200	

Boom length	Jib Radius (Feet)	5.0 Deg offset		15.0 Deg offset		25.0 Deg offset	
		Boom Angle	Rating (Pounds)	Boom Angle	Rating (Pounds)	Boom Angle	Rating (Pounds)
220' (67.1 m)	45	81.9	32,000*	-	-	-	-
	50	80.8	32,000*	-	-	-	-
	60	78.6	32,000*	80.1	32,000*	81.4	32,000*
	70	76.3	32,000*	77.8	32,000*	79.1	31,000*
	80	74.1	32,000*	75.5	32,000*	76.8	29,160*
	90	71.8	32,000*	73.2	32,000*	74.5	27,440*
	100	69.4	32,000*	70.9	32,000*	72.2	26,050*
	110	67.1	32,000*	68.5	32,000*	69.8	24,670*
	120	64.7	32,000*	66.1	31,910*	67.3	23,520*
	130	62.2	32,000*	63.6	29,980*	64.8	22,510*
140	59.7	31,800	61.1	28,360*	62.3	21,630*	
150	57.1	28,480	58.4	26,850*	59.6	20,770*	
160	54.4	25,600	55.8	25,600	56.9	20,070*	
170	51.7	23,080	53.0	23,090	54.1	19,450*	
180	48.8	20,860	50.1	20,870	51.1	18,910*	
190	45.8	18,910	47.0	18,920	48.1	18,360*	
200	42.6	17,170	43.8	17,180	44.8	17,190	
210	39.2	15,600	40.4	15,610	41.3	15,630	
220	35.5	14,200	36.7	14,210	37.5	14,220	

230' (70.1 m)	47	81.8	32,000*	-	-	-	-
	50	81.2	32,000*	-	-	-	-
	60	79.0	32,000*	80.4	32,000*	81.7	32,000*
	70	76.9	32,000*	78.3	32,000*	79.6	31,380*
	80	74.7	32,000*	76.1	32,000*	77.4	29,500*
	90	72.5	32,000*	73.9	32,000*	75.1	27,790*
	100	70.2	32,000*	71.6	32,000*	72.9	26,310*
	110	68.0	32,000*	69.3	32,000*	70.6	25,090*
	120	65.7	32,000*	67.0	32,000*	68.2	23,870*
	130	63.3	32,000*	64.7	30,760*	65.8	22,850*
140	60.9	31,470	62.2	29,060*	63.4	21,960*	
150	58.5	28,140	59.8	27,570*	60.9	21,130*	
160	55.9	25,260	57.2	25,270	58.3	20,400*	
170	53.3	22,760	54.6	22,760	55.7	19,770*	
180	50.6	20,540	51.9	20,550	52.9	19,160*	
190	47.8	18,570	49.1	18,580	50.1	18,590	
200	44.9	16,830	46.1	16,840	47.0	16,850	
210	41.7	15,260	42.9	15,270	43.8	15,280	
220	38.4	13,860	39.6	13,870	40.4	13,880	
230	34.8	12,590	35.9	12,600	36.7	12,620	

240' (73.2 m)	48	81.9	32,000*	-	-	-	-
	50	81.5	32,000*	-	-	-	-
	60	79.4	32,000*	80.8	32,000*	-	-
	70	77.3	32,000*	78.7	32,000*	79.9	31,640*
	80	75.2	32,000*	76.6	32,000*	77.8	29,840*
	90	73.1	32,000*	74.4	32,000*	75.7	28,170*
	100	71.0	32,000*	72.3	32,000*	73.5	26,690*
	110	68.8	32,000*	70.1	32,000*	71.3	25,370*
	120	66.6	32,000*	67.9	32,000*	69.1	24,250*
	130	64.3	32,000*	65.6	31,430*	66.8	23,200*
140	62.0	30,950	63.3	29,770*	64.5	22,320*	
150	59.7	27,610	61.0	27,620	62.1	21,460*	
160	57.3	24,730	58.6	24,740	59.6	20,770*	
170	54.8	22,220	56.1	22,220	57.1	20,070*	
180	52.3	20,000	53.5	20,010	54.5	19,440*	
190	49.6	18,040	50.9	18,050	51.8	18,060	
200	46.9	16,280	48.1	16,290	49.0	16,300	
210	44.0	14,720	45.2	14,730	46.1	14,740	
220	40.9	13,300	42.1	13,310	43.0	13,330	
230	37.7	12,030	38.8	12,040	39.6	12,060	
240	34.2	10,880	35.2	10,890	36.0	10,910	

# With 92HI Offset Tip Boom, 16HL Jib

195 klb + 64 klb CB 

360°

ANSI B 30.5  
DIN/ISO

## 40' (12.2 m) Jib length

Boom length	Jib Radius (Feet)	5.0 Deg offset		15.0 Deg offset		25.0 Deg offset		Boom length	Jib Radius (Feet)	5.0 Deg offset		15.0 Deg offset		25.0 Deg offset		
		Boom Angle	Rating (Pounds)	Boom Angle	Rating (Pounds)	Boom Angle	Rating (Pounds)			Boom Angle	Rating (Pounds)	Boom Angle	Rating (Pounds)	Boom Angle	Rating (Pounds)	
40' (12.2 m)	49	82.0	32,000*	-	-	-	-	270' (82.3 m)	52	81.9	32,000*	-	-	-	-	
	50	81.8	32,000*	-	-	-	-		60	80.4	32,000*	81.7	32,000*	-	-	
	60	79.8	32,000*	81.1	32,000*	-	-		70	78.6	32,000*	79.8	32,000*	80.9	32,000*	
	70	77.8	32,000*	79.1	32,000*	80.3	32,000*		80	76.7	32,000*	77.9	32,000*	79.0	30,770*	
	80	75.7	32,000*	77.0	32,000*	78.3	30,190*		90	74.8	32,000*	76.0	32,000*	77.1	29,160*	
	90	73.7	32,000*	75.0	32,000*	76.2	28,550*		100	72.9	32,000*	74.1	32,000*	75.2	27,660*	
	100	71.6	32,000*	72.9	32,000*	74.1	27,060*		110	70.9	32,000*	72.1	32,000*	73.2	26,420*	
	110	69.6	32,000*	70.8	32,000*	72.0	25,740*		120	69.0	32,000*	70.2	32,000*	71.2	25,190*	
	120	67.4	32,000*	68.7	32,000*	69.8	24,560*		130	67.0	32,000*	68.2	32,000*	69.2	24,180*	
	130	65.3	32,000*	66.5	32,000*	67.7	23,590*		140	64.9	29,310	66.1	29,320	67.2	23,310*	
	250' (76.2 m)	140	63.1	30,390	64.3	30,340*	65.4		22,600*	150	62.9	25,970	64.1	25,980	65.1	22,390*
		150	60.9	27,050	62.1	27,060	63.2		21,770*	160	60.8	23,090	62.0	23,100	63.0	21,610*
		160	58.6	24,170	59.8	24,170	60.8		21,050*	170	58.7	20,570	59.8	20,570	60.8	20,590
		170	56.2	21,650	57.4	21,660	58.5		20,400*	180	56.5	18,350	57.6	18,350	58.6	18,370
		180	53.8	19,430	55.0	19,440	56.0		19,450	190	54.2	16,370	55.3	16,380	56.3	16,390
190		51.3	17,470	52.5	17,480	53.5	17,490	200	51.9	14,620	53.0	14,620	53.9	14,640		
200		48.7	15,710	49.9	15,720	50.8	15,730	210	49.5	13,040	50.6	13,040	51.5	13,060		
210		46.0	14,140	47.2	14,150	48.1	14,160	220	47.0	11,620	48.1	11,630	48.9	11,640		
220		43.2	12,720	44.3	12,730	45.2	12,740	230	44.4	10,340	45.5	10,340	46.3	10,360		
230		40.2	11,450	41.3	11,450	42.1	11,470	240	41.7	9,170	42.7	9,170	43.5	9,190		
240	37.0	10,290	38.1	10,300	38.8	10,310	250	38.8	8,100	39.8	8,110	40.6	8,130			
250	33.5	9,230	34.6	9,240	35.2	9,260	260	35.7	7,140	36.7	7,150	37.4	7,160			
							270	32.4	6,250	33.4	6,260	33.9	6,280			
	51	81.9	32,000*	-	-	-	-									
	60	80.1	32,000*	81.4	32,000*	-	-		54	81.8	32,000*	-	-	-	-	
	70	78.2	32,000*	79.4	32,000*	80.6	32,000*		60	80.7	32,000*	81.9	32,000*	-	-	
	80	76.2	32,000*	77.5	32,000*	78.7	30,420*		70	78.9	32,000*	80.1	32,000*	81.2	32,000*	
	90	74.3	32,000*	75.5	32,000*	76.7	28,790*		80	77.1	32,000*	78.3	32,000*	79.4	30,960*	
	100	72.3	32,000*	73.5	32,000*	74.7	27,420*		90	75.3	32,000*	76.4	32,000*	77.5	29,370*	
	110	70.3	32,000*	71.5	32,000*	72.6	26,050*		100	73.4	32,000*	74.6	32,000*	75.7	27,940*	
	120	68.2	32,000*	69.5	32,000*	70.6	24,950*		110	71.5	32,000*	72.7	32,000*	73.8	26,660*	
	130	66.2	32,000*	67.4	32,000*	68.5	23,860*		120	69.6	32,000*	70.8	32,000*	71.8	25,520*	
260' (79.2 m)	140	64.1	29,850	65.3	29,860	66.3	22,930*		130	67.7	32,000*	68.9	32,000*	69.9	24,480*	
	150	61.9	26,520	63.1	26,520	64.2	22,100*		140	65.8	28,950	66.9	28,950	67.9	23,600*	
	160	59.7	23,630	60.9	23,640	61.9	21,370*		150	63.8	25,610	64.9	25,620	65.9	22,670*	
	170	57.5	21,110	58.7	21,120	59.7	20,660*		160	61.8	22,730	62.9	22,730	63.9	21,970*	
	180	55.2	18,890	56.4	18,890	57.3	18,900		170	59.7	20,200	60.9	20,210	61.8	20,220	
	190	52.8	16,920	54.0	16,930	54.9	16,940		180	57.6	17,980	58.7	17,990	59.7	18,000	
	200	50.4	15,170	51.5	15,170	52.4	15,190		190	55.5	16,010	56.6	16,020	57.5	16,030	
	210	47.8	13,590	49.0	13,600	49.9	13,610		200	53.3	14,250	54.4	14,250	55.3	14,270	
	220	45.2	12,170	46.3	12,180	47.2	12,200		210	51.0	12,680	52.1	12,680	53.0	12,690	
	230	42.4	10,890	43.5	10,900	44.3	10,920		220	48.7	11,260	49.7	11,260	50.6	11,280	
240	39.5	9,730	40.5	9,740	41.3	9,750		230	46.2	9,970	47.3	9,980	48.1	9,990		
250	36.4	8,670	37.4	8,680	38.1	8,700		240	43.7	8,800	44.7	8,800	45.5	8,820		
260	33.0	7,710	33.9	7,720	34.6	7,740		250	41.0	7,730	42.0	7,740	42.7	7,750		
								260	38.2	6,760	39.2	6,770	39.8	6,780		
								270	35.1	5,870	36.1	5,880	36.7	5,900		
								280	31.9	4,680*	32.8	4,940*	33.3	5,090		

# With 92HI Offset Tip Boom, 16HL Jib

195 klb + 64 klb CB

360°

ANSI B 30.5  
DIN/ISO

## 50' (15.2 m) Jib length

Boom length	Jib Radius (Feet)	5.0 Deg offset		15.0 Deg offset		25.0 Deg offset		Boom length	Jib Radius (Feet)	5.0 Deg offset		15.0 Deg offset		25.0 Deg offset	
		Boom Angle	Rating (Pounds)	Boom Angle	Rating (Pounds)	Boom Angle	Rating (Pounds)			Boom Angle	Rating (Pounds)	Boom Angle	Rating (Pounds)	Boom Angle	Rating (Pounds)
170' (51.8 m)	40	82.0	32,000*	-	-	-	-	210' (64.0 m)	46	81.9	32,000*	-	-	-	-
	50	79.4	31,920*	81.5	29,150*	-	-		50	81.0	32,000*	-	-	-	-
	60	76.7	30,970*	78.9	28,390*	80.9	26,390*		60	78.8	31,360*	80.6	28,540*	-	-
	70	74.0	30,100*	76.2	27,700*	78.2	24,420*		70	76.5	30,590*	78.4	27,920*	80.1	25,680*
	80	71.3	29,230*	73.4	27,060*	75.4	22,790*		80	74.3	29,860*	76.1	27,450*	77.8	24,000*
	90	68.5	28,430*	70.6	26,480*	72.6	21,300*		90	72.0	29,110*	73.8	26,880*	75.4	22,570*
	100	65.7	27,710*	67.8	26,010*	69.7	20,030*		100	69.6	28,410*	71.4	26,440*	73.1	21,320*
	110	62.8	27,110*	64.9	24,930*	66.7	18,960*		110	67.3	27,840*	69.0	25,970*	70.6	20,270*
	120	59.8	26,440*	61.9	23,300*	63.7	17,990*		120	64.9	27,250*	66.6	25,580*	68.2	19,290*
	130	56.8	25,920*	58.8	21,900*	60.6	17,200*		130	62.4	26,690*	64.1	24,290*	65.7	18,480*
180' (54.9 m)	140	53.6	25,160*	55.6	20,710*	57.3	16,490*	140	59.9	26,230*	61.6	22,980*	63.1	17,690*	
	150	50.2	23,590*	52.2	19,620*	53.9	15,850*	150	57.3	25,750*	59.0	21,790*	60.5	17,030*	
	160	46.7	22,190*	48.7	18,650*	50.3	15,270*	160	54.6	25,390*	56.3	20,780*	57.7	16,420*	
	170	43.0	21,000*	44.9	17,830*	46.4	14,800*	170	51.8	23,950	53.5	19,830*	54.9	15,840*	
	42	81.8	32,000*	-	-	-	-	180	49.0	21,740	50.6	19,020*	52.0	15,360*	
	50	79.8	32,000*	81.9	29,100*	-	-	190	45.9	19,790	47.6	18,270*	48.9	14,940*	
	60	77.3	31,060*	79.4	28,450*	81.3	26,390*	200	42.8	18,040	44.3	17,630*	45.6	14,580*	
	70	74.7	30,240*	76.8	27,760*	78.7	24,750*	210	39.4	16,480	40.9	16,490	42.1	14,290*	
	80	72.1	29,390*	74.2	27,130*	76.1	23,150*	220' (67.1 m)	47	82.0	32,000*	-	-	-	-
	90	69.5	28,580*	71.5	26,660*	73.4	21,650*		50	81.3	32,000*	-	-	-	-
100	66.8	27,930*	68.8	26,120*	70.7	20,390*	60		79.2	31,420*	81.0	28,520*	-	-	
110	64.1	27,270*	66.1	25,670*	67.9	19,300*	70		77.0	30,750*	78.8	27,970*	80.4	25,850*	
120	61.3	26,700*	63.3	23,980*	65.0	18,380*	80		74.9	29,950*	76.6	27,480*	78.2	24,260*	
130	58.4	26,150*	60.3	22,510*	62.1	17,550*	90		72.6	29,210*	74.4	26,920*	76.0	22,850*	
140	55.4	25,600*	57.3	21,300*	59.0	16,800*	100		70.4	28,660*	72.1	26,510*	73.7	21,650*	
150	52.3	24,420*	54.2	20,190*	55.8	16,150*	110		68.1	27,990*	69.9	26,050*	71.4	20,520*	
160	49.1	22,980*	50.9	19,200*	52.5	15,580*	120		65.8	27,450*	67.5	25,630*	69.1	19,620*	
170	45.6	21,740*	47.5	18,350*	49.0	15,080*	130		63.5	26,900*	65.2	24,860*	66.7	18,700*	
180	42.0	20,700*	43.8	17,610*	45.2	14,660*	140	61.1	26,370*	62.8	23,560*	64.2	17,920*		
190' (57.9 m)	43	81.9	32,000*	-	-	-	-	150	58.6	26,000*	60.3	22,370*	61.7	17,300*	
	50	80.3	32,000*	-	-	-	-	160	56.1	25,530*	57.7	21,240*	59.2	16,690*	
	60	77.8	31,130*	79.8	28,510*	81.7	26,360*	170	53.5	23,410	55.1	20,330*	56.5	16,080*	
	70	75.4	30,280*	77.4	27,860*	79.2	25,130*	180	50.8	21,190	52.4	19,430*	53.7	15,620*	
	80	72.9	29,550*	74.9	27,230*	76.7	23,410*	190	48.0	19,220	49.6	18,700*	50.8	15,160*	
	90	70.4	28,840*	72.3	26,730*	74.1	21,980*	200	45.0	17,480	46.6	17,490	47.8	14,800*	
	100	67.8	28,150*	69.8	26,210*	71.5	20,720*	210	41.9	15,910	43.4	15,920	44.6	14,500*	
	110	65.2	27,510*	67.2	25,790*	68.9	19,640*	220	38.6	14,510	40.1	14,520	41.2	14,210*	
	120	62.6	26,880*	64.5	24,580*	66.2	18,720*	230' (70.1 m)	49	81.9	32,000*	-	-	-	-
	130	59.9	26,300*	61.7	23,160*	63.4	17,830*		50	81.7	32,000*	-	-	-	-
140	57.0	25,890*	58.9	21,860*	60.5	17,100*	60		79.6	31,420*	81.3	28,460*	-	-	
150	54.1	25,320*	56.0	20,710*	57.5	16,410*	70		77.5	30,750*	79.2	28,040*	80.8	25,860*	
160	51.1	23,860*	52.9	19,750*	54.4	15,870*	80		75.4	30,010*	77.1	27,490*	78.7	24,490*	
170	48.0	22,550*	49.7	18,860*	51.2	15,330*	90		73.3	29,290*	75.0	27,050*	76.5	23,100*	
180	44.6	21,370*	46.4	18,070*	47.8	14,890*	100		71.1	28,680*	72.8	26,550*	74.3	21,880*	
190	41.1	20,380*	42.8	17,380*	44.1	14,540*	110		69.0	28,150*	70.6	26,140*	72.1	20,850*	
45	81.8	32,000*	-	-	-	-	120		66.8	27,530*	68.4	25,750*	69.9	19,840*	
50	80.6	32,000*	-	-	-	-	130		64.5	27,030*	66.1	25,340*	67.6	19,000*	
60	78.3	31,310*	80.2	28,520*	-	-	140	62.2	26,560*	63.8	24,060*	65.3	18,260*		
70	76.0	30,430*	77.9	27,950*	79.6	25,400*	150	59.9	26,100*	61.5	22,870*	62.9	17,510*		
80	73.6	29,640*	75.5	27,320*	77.2	23,740*	160	57.5	25,570	59.1	21,790*	60.4	16,940*		
90	71.2	28,940*	73.1	26,770*	74.8	22,270*	170	55.0	23,070	56.6	20,810*	57.9	16,320*		
100	68.8	28,280*	70.6	26,380*	72.3	21,100*	180	52.5	20,850	54.0	19,930*	55.3	15,820*		
110	66.3	27,700*	68.1	25,870*	69.8	20,010*	190	49.8	18,890	51.3	18,900	52.6	15,380*		
120	63.8	27,040*	65.6	25,240*	67.2	19,010*	200	47.1	17,130	48.6	17,140	49.8	15,010*		
130	61.2	26,570*	63.0	23,730*	64.6	18,130*	210	44.2	15,570	45.7	15,580	46.8	14,650*		
140	58.5	26,100*	60.3	22,430*	61.9	17,410*	220	41.1	14,160	42.6	14,170	43.7	14,190		
150	55.8	25,620*	57.6	21,240*	59.1	16,730*	230	37.9	12,880	39.3	12,890	40.3	12,910		
160	53.0	24,640*	54.7	20,290*	56.2	16,160*									
170	50.0	23,340*	51.7	19,380*	53.2	15,600*									
180	46.9	22,100*	48.6	18,530*	50.0	15,150*									
190	43.7	20,350	45.3	17,840*	46.6	14,760*									
200	40.2	18,600	41.8	17,220*	43.0	14,400*									

